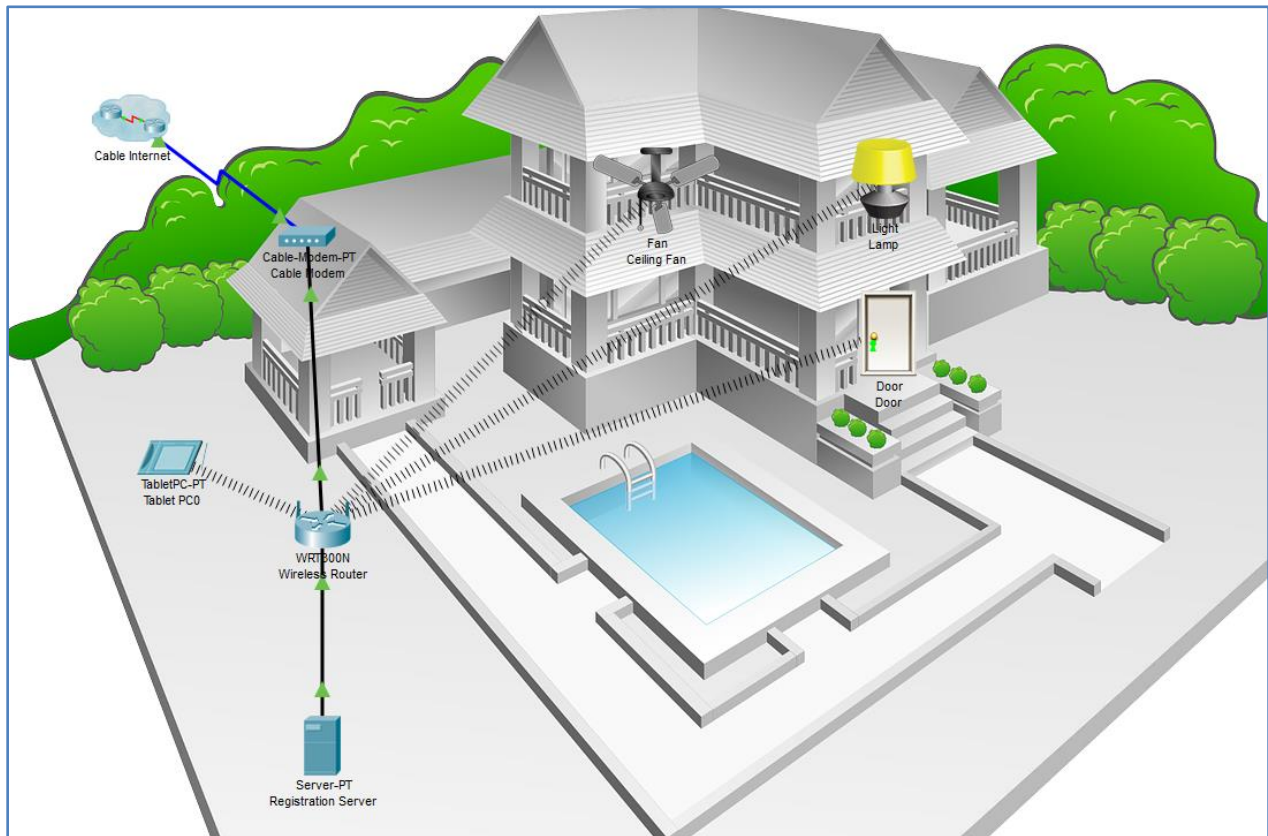


## Packet Tracer – Connect IoT Devices to a Registration Server

### The Smart Home Network



### Objectives

**Part 1: Add a Registration Server to the Network**

**Part 2: Register IoT Devices to the Registration Server**

### Background / Scenario

In this activity you will add a registration server and several IoT devices to an existing home network and monitor those devices through the registration server.

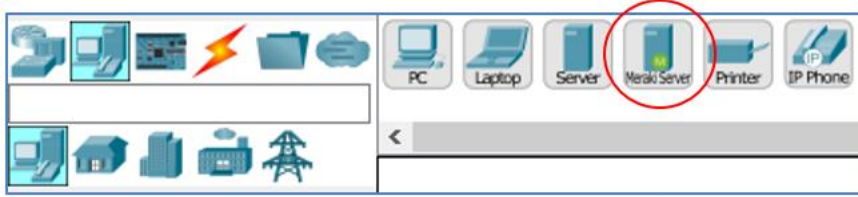
### Part 1: Add a Registration Server to the Network

**Step 1: Open the Registration\_Server.pkt file and save the file to your computer**

**Step 2: Add a registration server on the network**

- a. Place the **Server** end device onto the workspace and connect it to the home gateway.  
Find the **Server** in the **End Devices Selection** box and drag it to the workspace.

## Packet Tracer - Connect IoT Devices to Registration Server

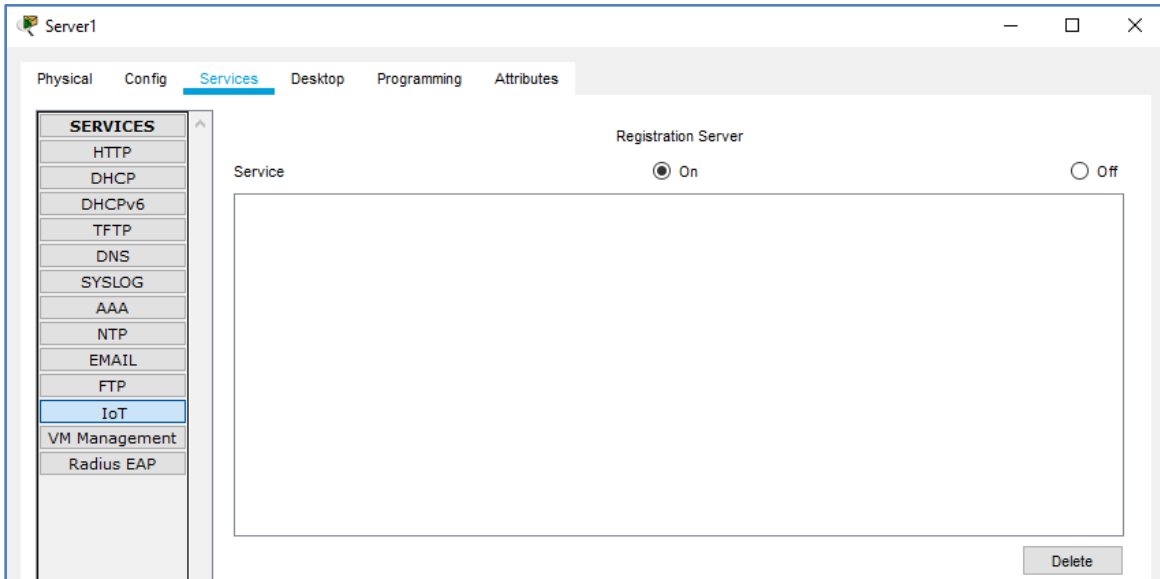


- b. Connect the server to the wireless router.

Using a copper straight-through cable, connect the server to the wireless router.

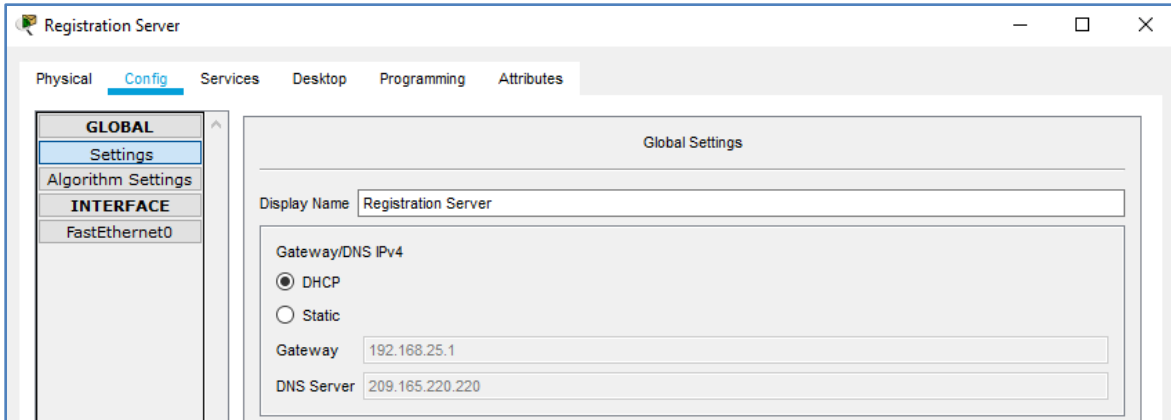
- c. Enable the registration server service on the server.

Click the server in the workspace to open the configuration window. Click the **Services** tab and then click the **IoT** service in the left pane. Click the “**On**” button to enable the service.

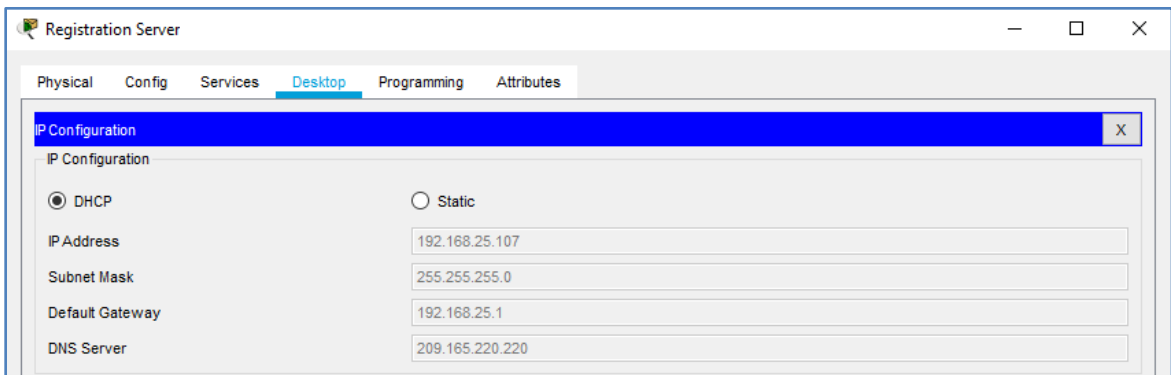


- d. Configure the server.

Click the **Config** tab. In the **Global Settings** window change the **Display Name** to **Registration Server** and change the **DHCP/DNS IPv4** setting from the default **Static** to **DHCP**.



Verify that the server has received an IPv4 address from the home gateway by clicking the **Desktop** tab and then the **IP Configuration** icon.



Note that, in this example, the IPv4 address assigned to the server is 192.168.25.107. Yours may be different.

Close the **Registration Server** window.

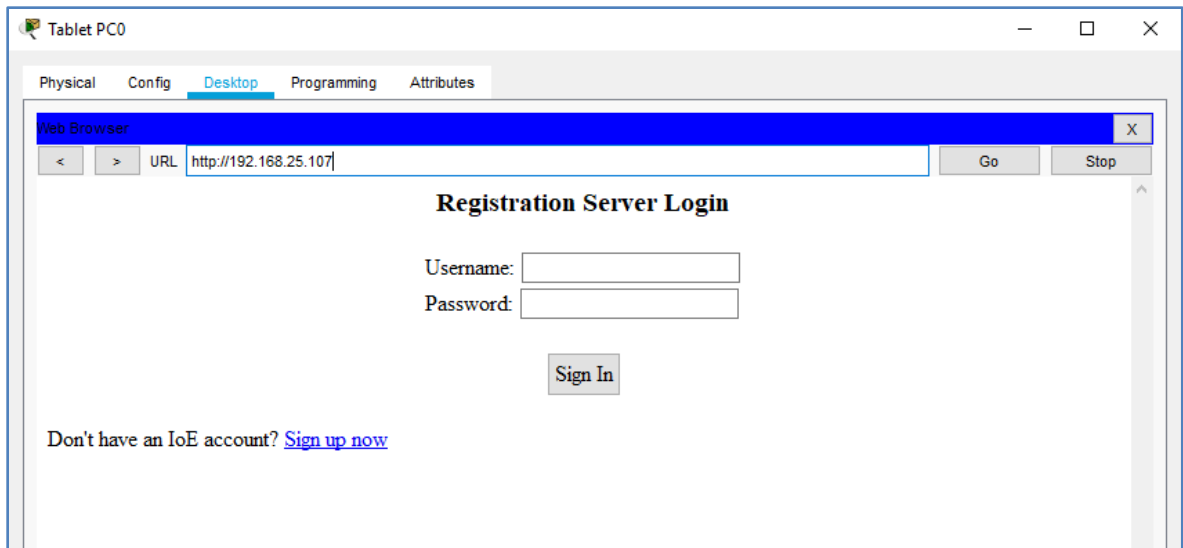
## Part 2: Register Devices to the Registration Server

### Step 1: Create a registration server account

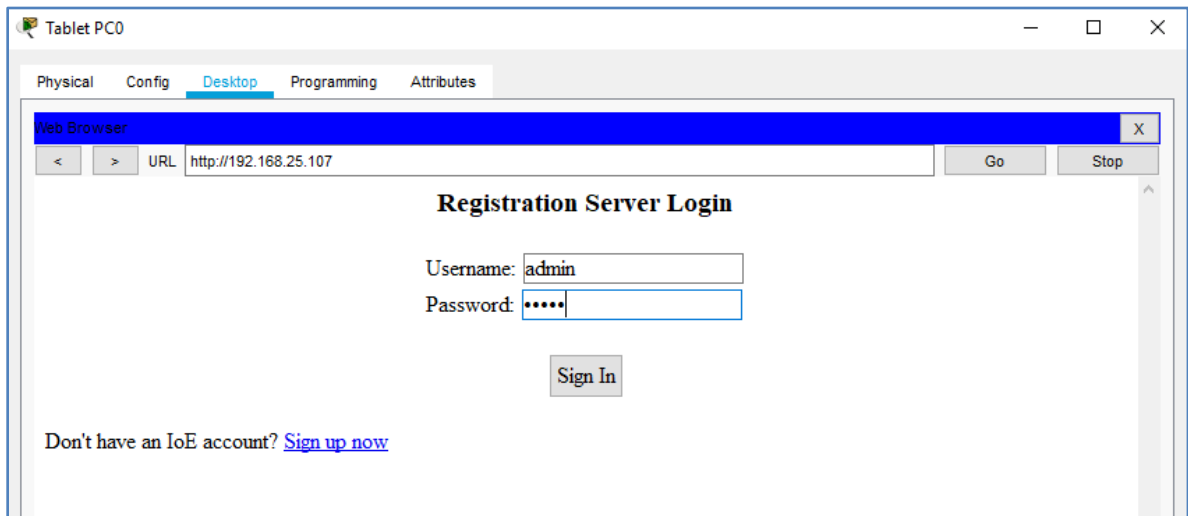
- Click the **Tablet** icon to open the **Tablet** configuration window. Click the **Web Browser** icon in the **Desktop** tab. Enter the IPv4 address of the **Registration Server** in the **URL** box and then click **Go**.

Because there is no IoT account created yet, one will need to be created. Click the **Sign Up Now** option.

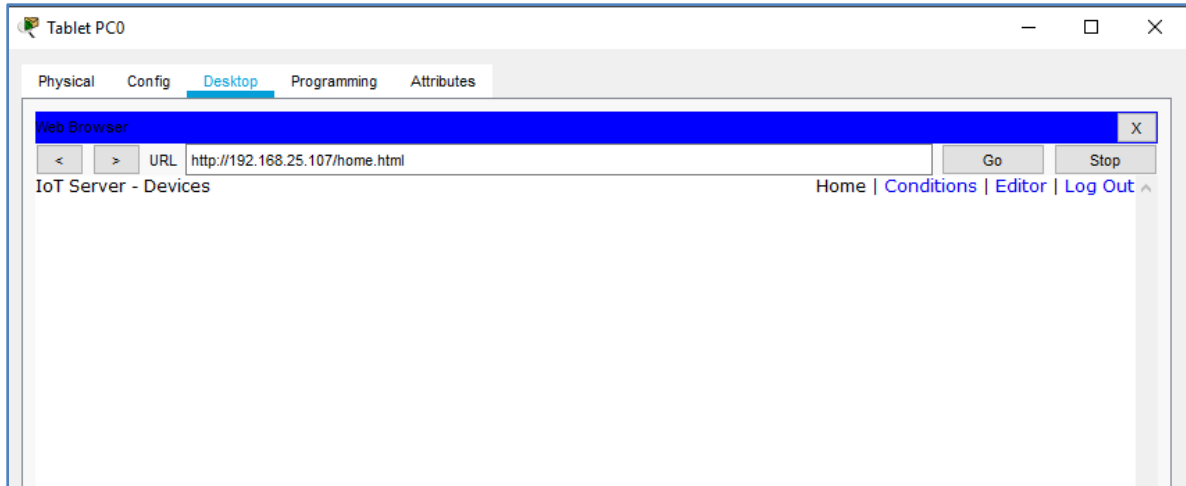
## Packet Tracer - Connect IoT Devices to Registration Server



Select a username and password and then click **Create** to create the IoT account.



Notice in the **IoT Server – Devices** window there are no IoT devices listed. This is because all the devices are still registered with the home gateway.

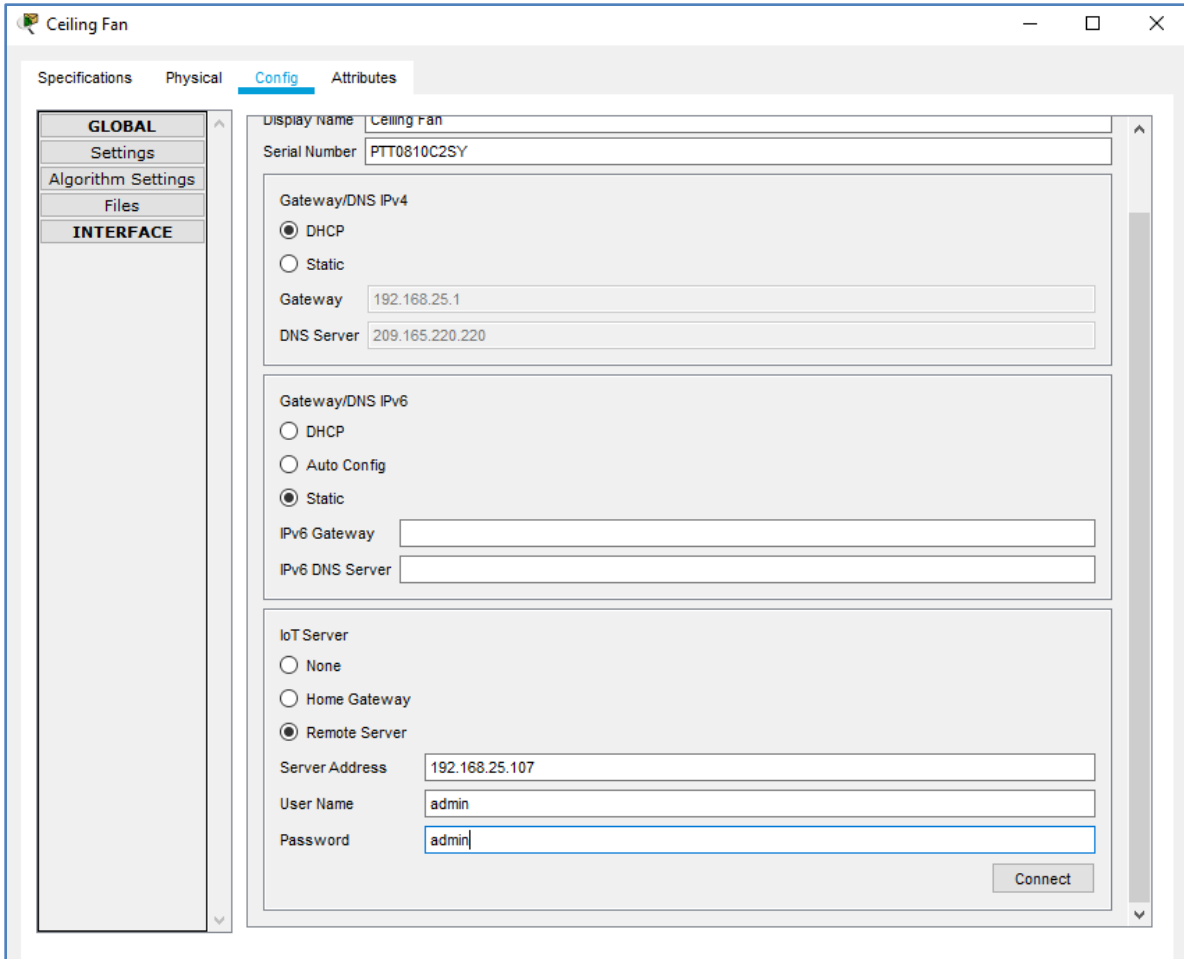


Close the **Tablet PC0** window.

### Step 2: Register IoT devices to the registration server

- a. Configure the ceiling fan to register with the registration server.

Click the **Ceiling Fan** icon in the workspace to open the device configuration window and then click the **Config** tab. Change the **IoT Server** type from **Home Gateway** to **Remote Server**. Enter the IP address of the registration server from Part 1, and the IoT account **Username** and **Password** created in Step 1 above. Next, click the **Connect** button.



Close the Ceiling Fan window.

- b. Configure the lamp and the door IoT devices to register with the registration server in the same manner.

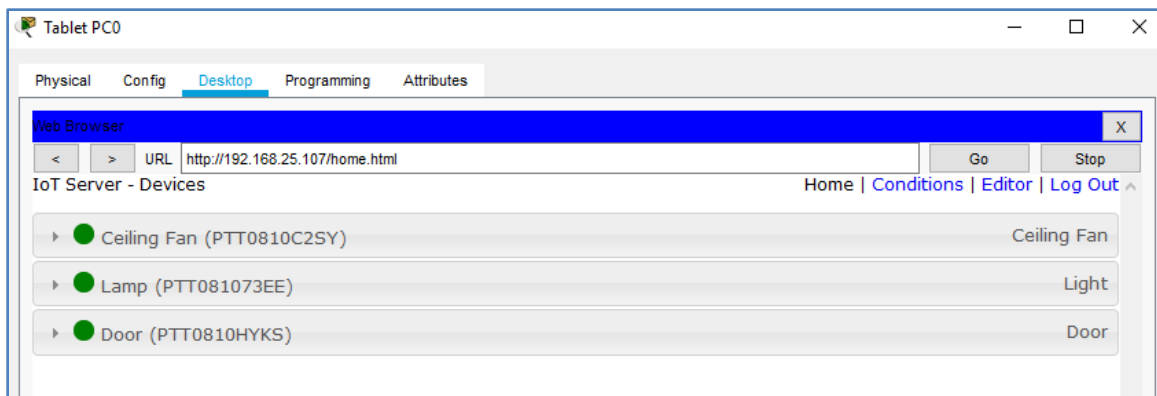
### Step 3: Verify that the IoT devices are registered to the registration server

Access the IoT registration server through the wireless **Tablet** web browser using credentials from Step 1 above.

The three IoT devices, the ceiling fan, the lamp, and the door should now be registered with the IoT server.

## Packet Tracer - Connect IoT Devices to Registration Server

---



Close the Tablet PC0 window.

### Step 4: Close Packet Tracer